



Welding Excellence & Forging Trust



Capability Statement

2024

TWE is dedicated to providing exceptional engineering, fabrication, and installation services that exceed client expectations. Our focus on quality, innovation, and safety ensures reliable and high-performance solutions.

COMPANY OVERVIEW

For over two decades, TWE has been a leader in engineering, fabrication, and installation services across diverse sectors, including energy, industrial, mining, and commercial. Our commitment to quality, innovation, and client satisfaction has solidified our reputation as a trusted partner.

CORE COMPETENCIES

- Industrial Services
- Commercial Projects
- Engineering & Fabrication
- Energy & Mining
- Remediation Services
- Commissioning
- Site Management

OUR SERVICES

We secure success through our unwavering commitment to customer satisfaction, integrated fabrication practices, exceptional craftsmanship, quality and reliability, innovation, and cost-effectiveness.

BACKGROUND

- **Structure:**
 - TWE Pty Ltd ACN 102 247 389, headquartered at 1/5 Glastonbury Ave, Unanderra, 2526 Australia.
 - A workforce of over 100 skilled employees and 200 proficient subcontractors, operating across multiple locations.
- **Vision & Commitment:**
 - Our vision is to be acknowledged as the preferred partner for integrated fabrication and maintenance services.
 - We aim to build long-lasting client relationships by consistently delivering high-quality results on time and within budget.

OUR TEAM

- **Jimmy Kim, Managing Director:** With over 40 years of experience in the technology welding engineering industry, Jimmy Kim leads with passion for teaching and collaborative thinking. His commitment to excellence and community engagement is well recognized.
- **Admin & Accounts Team:** The backbone of TWE, ensuring smooth operations, compliance, and up-to-date standards across all functions. Their dedication keeps the business running efficiently.
- **Operations & Site Managers:** A strong executive team working closely with project managers, supervisors, and team leaders to deliver projects on time and budget, with a culture of zero harm and zero defects.

OUR VALUES

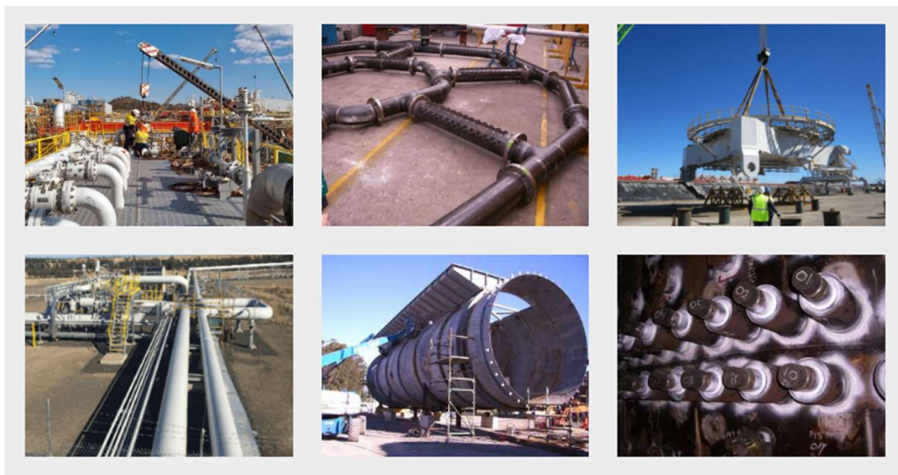
- **Client-Centric Excellence:** Providing unparalleled service and going the extra mile to exceed client expectations.
- **Emissions Reduction:** Prioritizing sustainable practices to actively contribute to emissions reduction.
- **Community Support:** Investing in local initiatives, supporting educational programs, and fostering community partnerships.
- **Duty of Care:** Ensuring the safety and well-being of employees, clients, and communities with rigorous safety protocols and ongoing training.

ETHICAL STANDARDS

- Delivery of promised services with transparency, honesty, and directness.
- Prioritizing the well-being and safety of all individuals.
- Striving for equitable treatment and respect towards everyone.

CAPABILITIES

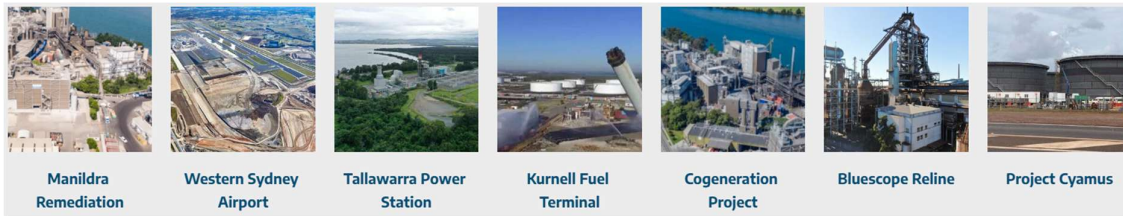
- **Industrial Shutdowns:** Minimizing downtime and optimizing productivity with comprehensive shutdown and maintenance services.
- **Remedial Services:** Addressing root causes of structural and maintenance issues for long-term stability and safety.
- **Labour Resources:** Offering skilled labour support, ensuring compliance with safety regulations and delivering high-quality outcomes.
- **Engineering and Capital Works:** Designing and delivering robust solutions from concept to execution.
- **Facilities Management:** Providing ongoing support to ensure optimal performance and longevity.
- **Operations and Maintenance:** Maintaining and optimizing systems for smooth operations.
- **Specialized A-Class Welders:** Delivering precision and craftsmanship in every weld.



SPECIALIZED SERVICES

- **Pressure Welding:** Providing strong, durable, and precise welds using advanced techniques and high-quality materials.
- **Boiler Maintenance:** Offering thorough inspections, cleaning, and tune-ups to extend the life and improve performance of boilers.

- **Piping:** Providing customized piping solutions with unmatched quality and efficiency.
- **Structural Mechanical:** Delivering comprehensive structural and mechanical solutions with a commitment to safety and quality.

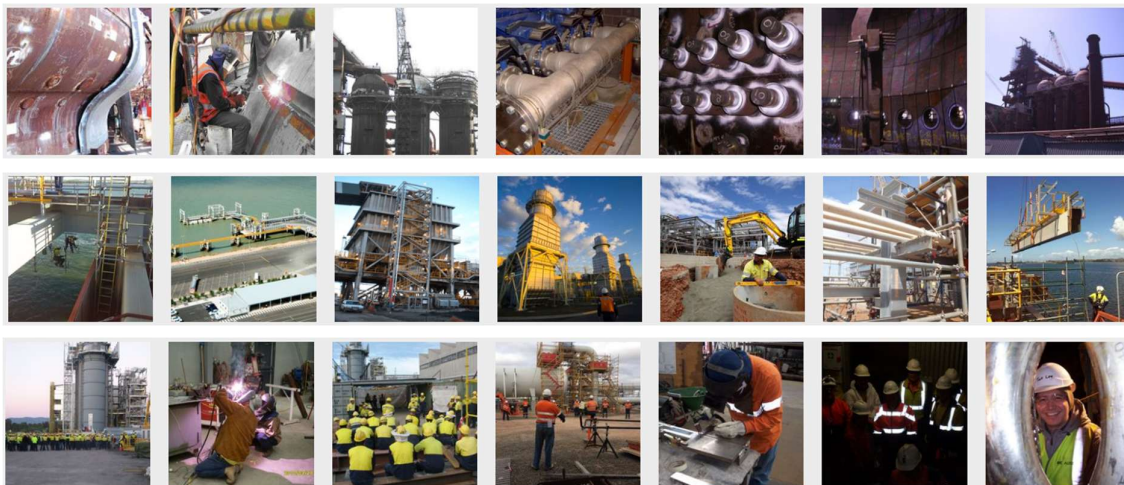


OUR TRAINING

TWE has established a testing and training facility at its Unanderra location to address quality gaps and provide clients with highly skilled tradesmen. Our training program ensures tradesmen are fully certified and regularly acquire new skills. We are in the process of establishing a Registered Training Organisation (RTO) to offer comprehensive services in engineering and metal trades.

SOME OF OUR PROJECTS

- **Tallawarra B Filter House:** Worked alongside GE and Energy Australia, contributing to the build and commissioning of the filter house, stairs, and platforms.
- **Manildra Power Station:** Contributed to the Cogeneration project, including a natural gas pipeline and turbines.
- **Cogeneration Bridge:** Delivered the bridge and associated pipework for the new power station on time and on budget.
- **Western Sydney Airport:** Provided specialized welders, pipe fitters, and mechanical fitters for the construction.
- **Vales Point Power Station:** Supplied specialized welders and pipe fitters for shutdowns over the last decade.
- **RTAY - Rio Tinto:** Met all expectations and deadlines for work on the coal-fired boiler.



CONTACT INFORMATION

- **Address:** 1/5 Glastonbury Ave, Unanderra, 2526 Australia
- **Phone:** 02 4271 5533
- **Email:** info@twe.net.au
- **Website:** www.twe.net.au